

THE 113TH ANNUAL

NORFOLK HUNT HORSE SHOW

May 25 & 26, 2024

- ★ \$3,000
1.10m Jumper Classic
- ★ \$2,500
Norfolk Hunter
Derby
- ★ 2'6"
Hunter Derby
- ★ Academy
Classes
- ★ Thoroughbred
Division

The Tradition Continues!
NEHC, MHC, MHJ, RIHA Affiliated

Original artwork by Gretchen Almy Designs



Enter online at:
www.HorseShowing.com

Norfolk Hunt Steeplechase Course
240 North St., Medfield, MA
www.norfolkhunt.com



NORFOLK HUNT HORSE SHOW

Norfolk Hunt Steeplechase Course, 240 North Street, Medfield, Massachusetts
Saturday and Sunday, May 25 & 26, 2024

New England Horseman's Council, Massachusetts Horseman's Council
Massachusetts Hunter/Jumper
Rhode Island Horseman's Association

JUDGES

June Gillis Ahern, Hunter (Saturday/Sunday) Stoughton MA
Tricia Moss, Short Stirrup (Saturday) Westford, MA
Mary Charette-Cawley, Jumper/Equitation (Saturday/Sunday) Tiverton, RI

COURSE DESIGNER

Sam Burger

STEWARD

Carly Fisher, Franlin MA

SHOW MANAGER

Catherine Kennedy, Walpole MA

SECRETARY

Julie Shea 617-335-7017 • Sheahorseshowservices@gmail.com

SHOW COMMITTEE

Cindy Cleaves • Taryn Connor • Kathryn Estes • Catherine Kennedy
Lisa Fitzgerald Lewis • Kimberly Maloomian • Dan Moon

EMT

Amy Ramsey

VETERINARIAN

Elizabeth Maloney, DVM

Farrier

Larry Hill Horseshoeing

Announcer

Paul Eason

Enter online at: horseshowing.com

PLEASE PATRONIZE OUR ADVERTISERS



Saturday, May 25, 2024

RING 1

2'3" WARM UP: 6:45-7:45

8:00 AM START TIME

- 82. Clear Blue (open through class 131)
- 140. Norfolk Jumpers (.65m)
- 141. Norfolk Jumpers (.65m)
- 142. Norfolk Jumpers (.65m)
- 154. MHJ .65M Modified JR/AM Jumper Medal
- 126. Hopeful Jumper (.85m)
- 127. Hopeful Jumper (.85m)
- 128. Hopeful Jumper (.85m)
- 155. MHJ .85 Modified JR/AM Jumper Medal
- 129. Low Training Jumper (.95m)
- 130. Low Training Jumper (.95m)
- 131. Low Training Jumper (.95m)
- 105. \$500 SmartPak Jumper Classic (.95m)**
- 156. MHJ 1.00M Modified JR/AM Jumper Medal
- 16. Children's Equitation (2'-2'6")
- 17. Children's Equitation (2'-2'6")
- 18. Children's Equitation Flat
- 19. Open Equitation U/18 Flat
- 20. Open Equitation U/18 Fences
- 29. MHC Junior Medal
- 24. MHJ Junior Medal
- 30. MHC Junior Medal
- 31. RIHA Junior Medal
- 32. NEHC Junior Medal
- 152. RIHA Junior Medal
- 33. NEHC Junior Medal

RING 2:

2'3" WARM UP: 6:45-7:45

8:00 AM START TIME

- 87. Norfolk Low Hunter (All day at set height)
- 58. Pre-Children's Hunter (2 ft)
- 59. Pre-Children's Hunter (2 ft)
- 70. Pre-Children's Equitation (2 ft)
- 71. Pre-Children's Equitation (2 ft)
- 60. Pre-Children's Hunter U/S
- 72. Pre-Children's Equitation Flat
- 73. Open Hunter Horse/Pony (2'-2'3")
- 74. Open Hunter Horse/Pony (2'-2'3")
- 75. Open Hunter Horse/Pony U/S

- 55. Special Junior Hunter (2'3")
- 56. Special Junior Hunter (2'3")
- 57. Special Junior Hunter U/S
- 14. Junior Equitation U/18 Flat
- 15. Junior Equitation U/18 Fences (2'6")
- 25. MHC Mini Medal 1
- 22. RIHA Mini Medal 1
- 133. MHC Mini Medal 2
- 153. RIHA Mini Medal 2
- 26. MHJ Mini Medal
- 13. MHJ Children's Medal
- 64. Children's Hunter (3ft/2ft)
- 65. Children's Hunter (3ft/2ft)
- 66. Children's Hunter U/S
- 135. DziaSport 2'6" Hunter Derby (2'-2'6")**

RING 3

CROSS RAIL WARM UP: 6:45-7:45 AM

8:00 AM START TIME

- 2. Short Stirrup EQ O/F
- 3. Short Stirrup EQ O/F
- 50. Short Stirrup Hunter
- 51. Short Stirrup Hunter
- 1. Short Stirrup EQ Flat
- 52. Short Stirrup Hunter U/S
- 54. MHJ Short Stirrup
- 53. Short Stirrup Classic
- 4. Leadline Equitation
- 5. Leadline Suitability
- 6. Leadline Championship
- 7. Walk Trot Equitation
- 8. Walk Trot Equitation Championship
- 9. Walk Trot Pleasure
- 10. Walk Trot Pleasure Championship
- 11. Walk Trot Hunter U/S
- 116. Walk Trot Ground Rails
- 117. Walk Trot Ground Rails
- 118. Academy Pleasure
- 119. Academy Equitation
- 120. Academy Pleasure Championship
- 121. Academy Equitation Championship
- 122. Academy Cross Rails O/F
- 123. Academy Cross Rails O/F
- 124. Academy Cross Rails Flat

Sunday, May 26, 2024

RING 1

2'3" WARM UP: 6:45-7:45

8:00 AM START TIME

- 83. Clear Blue (all day—except classics)
- 143. Norfolk Jumpers (.65m)
- 144. Norfolk Jumpers (.65m)
- 145. Norfolk Jumpers (.65m)
- 157. MHJ .65M Modified JR/AM Jumper Medal
- 90. Hopeful Jumper (.85m)
- 91. Hopeful Jumper (.85m)
- 92. Hopeful Jumper (.85m)
- 158. MHJ .85M Modified JR/AM Jumper Medal
- 93. Low Training Jumper (.95m)
- 94. Low Training Jumper (.95m)
- 95. Low Training Jumper (.95m)
- 96. Schooling Jumper (1.0m)
- 159. MHJ 1.00M Modified JR/AM Jumper Medal
- 102. \$500 Mor Linn Farm Jumper Classic (1.0m)**
- 137. Pre-Training Jumper (1.10m)
- 138. Pre-Training Jumper (1.10m)
- 106. \$3,000 Louisburg Farm Jumper Classic (1.10m)**

JUMPERS

- .70m = Fences 2'3"
- .80m = Fences 2'7"
- .85m = Fences 2'9"
- .95m = Fences 3'1"
- 1.00m = Fences 3'3"
- 1.05m = Fences 3'5"
- 1.10m = Fences 3'7"
- 1.15m = Fences 3'9"

All rings are grass footing

RING 2

2'6" WARM UP: 6:45-7:45

8:00 AM START TIME

- 108. Hunter Pleasure
- 109. Hunter Pleasure Championship
- 114. English Pleasure Hunt Seat
- 115. English Pleasure H/S Championship
- 107. NEHC Pleasure
- 38. Adult Equitation Flat
- 37. Adult Equitation O/F
- 43. MHC Adult Medal
- 42. MHJ Adult Medal
- 134. MHC Adult Medal
- 36. RIHA Adult Medal
- 40. NEHC Adult Medal
- 151. RIHA Adult Medal
- 41. NEHC Adult Medal
- 88. Norfolk Low Hunter (All day at set height)
- 147. Adult Amateur Hunter (3ft)
- 148. Adult Amateur Hunter (3ft)
- 149. Adult Amateur Hunter U/S
- 47. Special Hunter O/F (2'6")
- 48. Special Hunter O/F (2'6")
- 49. Special Hunter U/S
- 67. Norfolk Thoroughbred Hunter O/F (2'6")
- 68. Norfolk Thoroughbred Hunter O/F (2'6")
- 69. Norfolk Thoroughbred Hunter Flat
- 79. Low Amateur Adult O/F (2'6")
- 80. Low Amateur Adult O/F (2'6")
- 81. Low Amateur Adult Hunter U/S
- 39. MHC Adult Mini Medal
- 150. RIHA Adult Mini Medal
- 12. MHJ Adult Mini Medal
- 125. \$2,500 Norfolk Hunter Derby 2'9" (2 rounds)**

1. Entries Close May 26. They must be made on official forms and signed by each exhibitor, rider, driver, handler and trainer(s), or his/ her agent(s). If the owner is less than 21 years old, the entry blank must be signed by a representative who is of age and who by such signature individually assumes responsibility and risk as stated above signature. The entry blank must include the exhibitor's home address and zip code.
 2. Refunds of entry fees will not be made unless a vet or doctor's certificate of lameness, injury, or illness is shown.
 3. There will be an Office Fee of \$75.00 charged to each horse on property but not showing.
 4. The Show Management reserves the rights to vary or change show officials or judges, move, cancel, divide or combination of classes.
 5. Proper attire must be worn by a competitor at all times.
All riders must wear protective headgear at all times while mounted.
 6. A schooling area will be provided. No poling allowed.
 7. Dogs **MUST** be leashed at all times. A \$100 fine will be levied automatically on the entry form if a loose dog is found and identified.
 8. A minor must have a valid driver's license issued by their state of residence in order to operate a motorized vehicle on competition grounds.
 9. A trophy and/ or cash and eight ribbons will be awarded in all classes unless otherwise stated. Ribbons will be awarded at ringside during the show at completion of classes. Prize money will be automatically deducted from your entry fees. Champion and Reserve Champion ribbons along with trophies must be picked up at the trophy tent.
 10. A \$25 fee for all warm-ups. Tickets at show office.
 11. General Parking: Vans and trailers only will be parked in an area near the rings. Limit of one vehicle may park in upper lot with vans containing 4+ horses. General car parking will be at by horse show office, and overflow will park in the lower field as necessary.
 12. An EMT will be on the grounds during show hours.
 13. Farrier on call – request at show office.
 14. All hunter classes will be judged on performance and soundness unless otherwise noted.
 15. If in the case of a Cooler or Perpetual trophy class being divided, the highest total points receives the trophy.
 16. Sharps receptacle is located in the Horse Show Office.
 17. Rings and Warm Up areas on grass.
 18. **Limited Stabling available upon request** off the showgrounds at Apple Knoll Farm (Millis, Massachusetts)
 19. Food and beverages will be available for purchase.
- Minors who do not have a valid driver's license which allows them to operate a motorized vehicle in the state in which they reside will not be permitted to operate a motorized vehicle of any kind, including, but not limited to, golf carts, motorcycles, scooters, or farm utility vehicles, on the competition grounds of licensed competitions. Minors who have a valid temporary license may operate the above described motorized vehicles as long as they are accompanied by an adult with a valid driver's license. The parent(s), legal guardian(s), or individual who signs the entry blank as a parent or guardian of a minor operating a motorized vehicle in violation of this rule are solely responsible for any damages, claims, losses or actions resulting from that operation. Violations of this rule will be cause for sanctions against the parent(s), guardian(s) and/or trainer(s) who are responsible for the child committing the offense. Penalties may include exclusion of the child, parent(s), guardian(s), and/or trainer(s) from the competition grounds for the remainder of the competition and charges being filed against any of the above individuals in accordance with Chapter 6. Wheelchairs and other mobility assistance devices for individuals with disabilities are exempt from this rule.

NORFOLK HUNT HORSE SHOW | EQUITATION

SHORT STIRRUP EQUITATION DIVISION

Rated "AA", NEHC, MHC. Entry fee for each class \$30. Open to riders 12 years of age or under. Not to compete in any other equitation classes at any show and have not competed in a jumping class exceeding 18" in height. To be judged at a walk, trot, & canter with only 8 riders to canter at a time. *Snowy River Championship Trophy & Ribbons.*

1. Short Stirrup Equitation Flat
2. Short Stirrup Equitation Over Fences
3. Short Stirrup Equitation Championship

LEADLINE DIVISION

Rated "C" MHC. Entry fee for each class \$25.

4. Leadline Equitation-Open to riders 6 years of age and under, who have not competed in any other class except for leadline. To be judged on equitation only.
5. Leadline Suitability. Same specs as class 4, but judged on suitability of mount to rider
6. Leadline Championship. Same specifications as classes 4&5. Judge both on equitation and suitability.

WALK TROT DIVISION

Rated "AA" NEHC, MHC. Classes 7 & 8. Rated "C" NEHC, MHC classes 9 & 10. Entry fee for each class \$30. Open to all riders 10 years of age or under. To be shown at a walk and trot only. Open to horses or ponies. Riders must not have been judged in a class at a show that required a canter or lope. No child entered may compete in any other class requiring entries to canter or lope. *Innisboffin Chipmunk Memorial Perpetual Trophy (Classes 7-11 to count).*

7. Walk-Trot Equitation
8. Walk-Trot Equitation Championship
9. Walk-Trot Pleasure Horse/Pony
10. Walk-Trot Pleasure Horse/Pony Championship
11. Walk-Trot Hunter Under Saddle
116. Walk-Trot Ground Rails
117. Walk-Trot Ground Rails

HUNT SEAT EQUITATION DIVISION

Rated AA MHC, NEHC, SEHA

Children's Equitation. Entry fee for each class \$35. Open to exhibitors who are eligible for Children's Hunter and who have not shown over a course where fences exceed 3'. Horses/ Large Ponies 2'6". Small/Medium ponies 2'.

16. Childrens Equitation O/F
17. Childrens Equitation O/F
18. Childrens Equitation Flat
19. Open Equitation U/18 Flat
20. Open Equitation U/18 Fences

Junior Equitation. Unrated. Entry fee for each class \$30. Open to Junior Riders. Fences 2'6".

14. Junior Equitation Flat
15. Junior Equitation Over Fences

QUALIFICATIONS FOR ALL MEDALS

A contestant must accumulate 10 points to qualify for finals. 1st = 10, 2nd = 6, 3rd = 4, 4th = 2, 5th = 1.

22. & 153. RIHA Hunt Seat Mini-Medal. Entry fee \$40. Open to junior members of the Rhode Island Horseman's Association who have not reached their fifteenth birthday and to riders 15 to 17 years of age who are eligible for Limit Equitation over fences as of December 1st in current show year and have not competed in classes in which the entry may be required to jump higher than 3'. All contestants are to compete over a course not exceeding eight fences and not less than six fences, excluding combination fences, at a height not to exceed 2'6", with at least one change of direction. One or more individual tests may be requested, at the judge's discretion. (USEF Tests 1-8). Contestants are not allowed to cross enter into any medal classes with fences 3'0" or higher or compete in a division or class with fences over 3'0" at any show during the year. Violation of this requirement disqualifies the competitor from the finals. The second place competitor shall qualify if the first place rider is disqualified and the class requirements are followed. RIHA Mini Medal Finals the top six contestants are to be tested (USEF Tests 1-8). A minimum of three competitors must complete the course.

24. MHJ Junior Medal. Entry fee \$40. Open to all junior riders who have not reached their 18th birthday as of December 2, 2015. Riders shall perform over at least 8 fences not to exceed 3'. One or more individual tests of the top 4 contestants may be requested at the judge's discretion. To fill a class and for points to count, at least two riders must complete the course.

26. MHJ Mini Medal. Entry fee \$40. Open to junior riders who have not reached their 15th birthday as of December 1st with the exception of Maiden and Novice riders who have not reached their 18th birthday as of December 1st. To perform over at least 8 fences not to exceed 2'6". Riders may not cross enter into the MHJ Children's Medal Horse of Children's pony medal at the finals. Ten points are required to qualify for the finals. To fill a class and for points to count, at least two riders must complete the course. Once qualified, riders may continue to compete in the class.

25. & 133. MHC Hunt Seat Mini-Medal. Entry fee \$40. Open to members of MHC who have not reached their fifteenth birthday and have not competed in classes in which the entry is required to jump higher than three feet. All contestants are to compete over a course not exceeding eight fences and not less

than six fences, excluding combination fences, at a height not to exceed 2'6" for ponies and horses. May compete after qualifying. Ten points are required to qualify for the finals. A Mini-Medal rider who competes in the Jr. Medal prior to the finals is no longer eligible for the Mini-Medal Final. To fill a class, at least three competitors must complete the course.

29. & 30. MHC Junior Hunt Seat Medal. Entry fee \$40. May compete after qualifying. Open to Junior members of the MHC who have not reached their 18th birthday. All contestants are required to perform over at least 8 fences not to exceed 3'. Ten points are required to qualify for the finals. To fill a class, at least 3 competitors must complete the course. If there is not a minimum of riders of either or both the Junior or Adult Medal qualifying class, the show can combine to meet the rider requirement. Riders will show at their respective heights.

31. & 152. RIHA Junior Hunt Seat Medal. Entry fee \$40. Open to junior members of the Rhode Island Horseman's Association who have not reached their eighteenth birthday. All contestants are required to perform over at least eight fences not to exceed 3'0" with at least one change of direction. One or more individual tests of the top four contestants may be requested at the judge's discretion. (USEF Tests 1-19). For the finals, the judge shall be required to work-off the top four contestants. A minimum of three exhibitors must complete the course.

32. & 33. NEHC Junior Hunt Seat Medal. Entry Fee \$45. Open to Junior members of the NEHC who have not reached their eighteenth birthday. All contestants are required to perform over at least eight fences set to a height from 3' to 3'3" with a combination and two changes of direction after the first obstacle. One or more individual tests of the top four contestants may be requested at the judge's discretion (USEF tests 1-23) To fill a class, at least three competitors must complete the course.

36. & 151. RIHA Adult Amateur Hunt Seat Medal. Entry fee \$40. Open to adult amateur members of the Rhode Island Horseman's Association. All contestants are required to perform over at least eight fences not to exceed 3', with at least one change of direction. One or more individual tests of the top four contestants may be requested at the judge's discretion. (USEF Tests 1-19). For the finals, the judge shall be required to work-off the top four contestants. A minimum of three exhibitors must complete the course.

Adult Amateur Hunt Seat Equitation -Entry fee \$30. Rated MHC, NEHC, AA. Open to all adult amateur competitors. Fences not to exceed 3'

37. Adult Amateur Hunt Seat Equitation O/F

38. Adult Amateur Hunt Seat Flat

39. MHC Adult Hunt Seat Mini Medal. Entry fee \$40. Open to adult members of MHC who have not jumped 2'9" or higher in the past 2 years. All contestants are to perform over a course not exceeding 8 fences and not less than 6 fences, excluding combinations and a height not to exceed 2'6" for horses and ponies. To fill a class 3 must complete the course. 10 points to qualify. May compete after qualifying.

12. MHJ Adult Mini Medal. Entry fee \$45. Open to all Adult Amateur riders that have not shown over a course where the fences exceeded 3' in the current year. To perform over a course of at least 8 fences not to exceed 2'6". Riders may not cross enter into the MHJ Adult Medal.

40. & 41. NEHC Adult Hunt Seat Medal. Entry Fee \$45. NEHC Adult Hunt Seat Medal: Open to Adult Amateur members of the NEHC. All contestants are required to perform over at least eight fences set at a height from 2'9" to 3' with a combination and two changes of direction after the first obstacle. One or more individual tests of the top four contestants may be requested at the judge's discretion. (USEF tests 1-23) To fill a class, at least three competitors must complete the course.

42. MHJ Adult Medal. Entry fee \$40. Open to all Adult Amateur riders. Riders shall perform over at least 8 fences 2'9" to 3' including a combination with at least two changes of direction after the first fence. One or more individual test of the top four contestants may be required at the judge's discretion. To fill a class and for points to count, at least two riders must finish the course. Once qualified riders may continue to show in the class until August 8th. After August 8th, only those riders not qualified may continue to compete in the class.

43. & 134. MHC Adult Amateur Hunt Seat Medal. Entry fee \$40. May compete after qualifying. Open to adult members of MHC. All contestants are required to perform over at least eight fences 2'6" to 2'9", with at least one change of direction. To fill a class at least three competitors must complete the course. If there is not a minimum of riders of either or both the Junior or Adult Medal qualifying class, the show can combine to meet the rider requirement. Riders will show at their respective heights.

150. RIHA Adult Amateur Hunt Seat Mini-Medal. Entry fee \$40. Open to adult amateur members of the Rhode Island Horseman's Association, who as of December 1st of the current show year have not jumped 3' or higher within the past two show years as a Junior or an Adult exhibitor at a recognized show. All contestants are to perform over at least six fences not to exceed 2'6" with no combinations. USEF Tests 1-8 may be asked at the judge's discretion. A minimum of three exhibitors must complete the course.

NORFOLK HUNT HORSE SHOW | HUNTERS

Hunter Divisions. Hunter Stake Class Prize Money unless noted \$30, \$25, \$20, \$15, \$10.

Short Stirrup Hunter Division. Rated "AA" NEHC, MHC, SEHA. Farney Bow Bell Championship Trophy and Ribbons. Division fee \$95 or \$35 per class. Open to riders 12 years of age or under. To be shown over a course of 4 to 8 fences at a height of 18". The fences shall be cross rails or verticals with no combination. Rider is not to compete in any other class that requires jumping fences any higher than 18".

50. Short Stirrup Hunter. This is the first round of Short Stirrup Classic

51. Short Stirrup Hunter Stake \$

52. Short Stirrup Hunter Under Saddle. To be shown at a walk, trot, & canter with only 8 horses or ponies to canter at one time.

Short Stirrup Classic. Sponsored by the Kennedy Family. Entry fee \$50. Eight ribbons & cooler. Riders qualify for this class in Class 50 Short Stirrup Hunter. This is the second round for the Short Stirrup Classic. Class 50 is the first round of the short stirrup classic.

53. Short Stirrup Classic

Special Junior Hunter Division. Rated SEHA, Gladys Hoyt Memorial Championship Trophy & ribbons. Division fee \$85 or \$35 per class. Open to horses and ponies to be ridden by juniors. Rider and horse/pony combination may not enter in any other MHJ or NEHC hunter division. Fences not to exceed 2'3".

55. Special Junior Hunter

56. Special Junior Hunter

57. Special Junior Hunter Stake U/S

MHJ Short Stirrup. Entry \$35. Open to riders 12 years of age and under. Riders shall not have competed in a class jumping over 18" in height. The fences shall be cross rails or verticals with no combinations. Riders may not cross enter into any other medal classes at MHJ Finals. 10 points are required to qualify for the finals. To fill a class at least two riders must complete the course. Once qualified, riders may continue to show in the class until August 8th. After that, only those riders not qualified may continue to compete.

54. MHJ Short Stirrup

Special Hunter Division. Unrated all. Fee \$35 per class. Open to horses and ponies with no restrictions as to age or status or rider or horse/pony. Fences will not exceed 2'6".

47. Special Hunter O/F

48. Special Hunter O/F

49. Special Hunter U/S

Children's Hunter Division. Rated "A" NEHC, MHC, SEHA. Mrs. Sherwin D Badger, ex. MFH Championship Trophy & Ribbons (Horse). June Lombard Memorial Championship Trophy & Ribbons (Pony). Division fee \$95 or \$35 per class. To be shown by junior exhibitors, 15-17 of age, must be eligible for intermediate equitation over fences as of December 1st of the current show year. Fences not to exceed 2' for small/medium ponies, 2'6" for large ponies, and 3' for horses; spreads not to exceed fence height. Same horse/pony rider combination can not show in any other rather division except for equitation at the show. Horses may be shown by another rider in any other division or section at the same show. Ponies may not cross enter into the regular pony hunter divisions. Logging for soundness at the discretion of the judge.

64. Children's Hunter

65. Children's Hunter Stake \$

66. Children's Hunter U/S

Open Hunter Horse. Division fee \$95 or \$35 per class. Open to all horses with no restriction as to age or status of rider or eligibility of horse. Fences will not exceed 2'6".

73. Open Hunter Horse/Pony

74. Open Hunter Horse/Pony

75. Open Hunter Horse/Pony U/S

Pre-Children's Hunter Division. B-rated MHC/NEHC. Division fee \$95 or \$35 per class. Open to Junior riders not eligible for limit equitation. Horses or ponies. Fence height to be at 2' with no combinations. At the same show, the same horse/rider or pony/rider may not cross enter into Children's Hunter or Pony Hunter or any class where fences exceed pony 2', horse 2'3".

58. Pre-Children's Hunter

59. Pre-Children's Hunter \$

60. Pre-Children's Hunter U/S

Pre-Children's Equitation Division. AA-rated MHC/NEHC. Division fee \$95 or \$35 per class. Open to junior riders not eligible for limit equitation. Horses or ponies. Fence height to be at 2' with no combinations. At the same show, the same horse/rider or pony/rider may not cross enter into any class where fences exceed 2'3".

70. Pre-Children's Equitation

71. Pre-Children's Equitation

72. Pre-Children's Equitation Flat

Adult Amateur Hunter Division. Rated "B" MHC, NEHC, SEHA. Alice Stewart Memorial Championship Trophy awarded to overall highest scorer. Mary Jane Hoey Trophy awarded to the highest 18-35 scorer. Search the Bar Memorial Trophy awarded to highest over 35 scorer. Division fee \$95 or \$35 per class. To be ridden by amateurs who are no longer eligible to compete as junior ex-

hibitors. Horse/rider combinations are not eligible for any other NEHC rated classes. Horses may be shown by a different rider in any other division or class at the same competition. To be judged on performance, soundness, manners, way of going, size of rider to mount, and suitability as an Adult Amateur Hunter. Horses and ponies may be jogged for soundness at judge's discretion. Height of fences 3', spreads not to exceed height of fence. Ponies may be ridden by adults. Suitability to count.

147. Adult Amateur Hunter

148. Adult Amateur Hunter Stake \$

149. Adult Amateur Hunter U/S

Low Adult Hunter Division. Rated "B" MHC, SEHA rated. Anna Powers Rowe Memorial Championship Trophy & Ribbons. Division fee \$95 or \$35 per class. Open to horses and ponies to be ridden by amateur adults. Rider and horse/pony combination may not enter any other rated Hunter division. Fences not to exceed 2'6". To be judged on manner, performance, and soundness.

79. Low Adult Hunter

80. Low Adult Hunter Stake \$

81. Low Hunter U/S

Norfolk Low Hunter. Unrated. Entry Fee \$40 per class. No restrictions as to age or status of rider or eligibility of horse. First trip counts towards the division. Extra trips may be added at any time if time allows.

87. Norfolk Low Hunter (All Day)

88. Norfolk Low Hunter (All Day)

\$2,500 Norfolk Hunter Derby. MHC Rated. Entry Fee \$150.

125. Hunter Derby. Course walk will be held before class. Open to all horses and riders. Riders are not limited to the number of horses they may ride. The class will consist of two rounds with the first being a classic hunter round and the second round will be a handy hunter round. Fences will be set at 2'9" with a minimum of four 3' option fences.

Obstacles will simulate those found in the hunt field and the course will offer a variety of jumps with different appearances including natural post and rail, stone wall, coop, hedge, brush, logs, natural foliage, and traditional hunter show jumps.

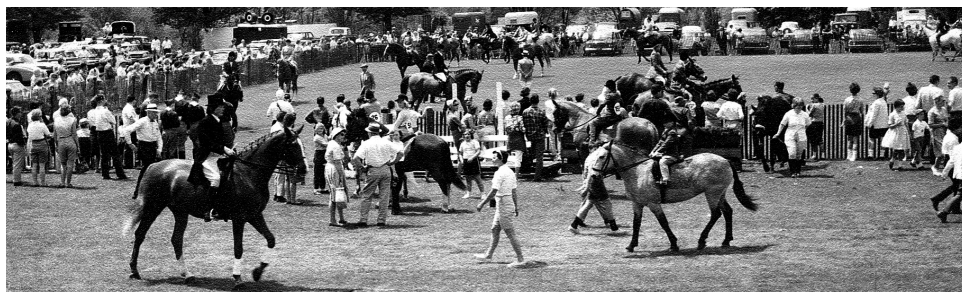
The course will be built to encourage and reward brilliant and daring horse & rider, and true athletic ability from the horse. Judged on hunter style, quality, movement, and brilliance. Attire: formal Hunting Attire or Buff breeches & Shadbelly or Dark Coat.

Round One: Hunter Classic Course. All riders will jump a course of at least ten 2'9" fences with a minimum of four 3' option fences with at least one in and out, one bending line, and one with an unrelated distance. Judged on hunter style, quality, movement, and brilliance.

Round Two: Handy Hunter Course: The top 8 horses will return in reverse order to jump a handy hunter round. All riders must ride for awards. Prize Money: \$1,000, \$500, \$350, \$250, \$150, \$100, \$75, \$75

DziaSport 2'6" Hunter Derby. MHC rated "A". Entry fee \$50.

135. This is a two round class open to amateur adults and juniors to be shown over a course of ten fences at 2'6" for horses & large ponies, 2' for small/medium ponies, with the first round judged on performance, hunter pace, style, quality and substance of movement. The top 4 or 25% from the first round will return to jump a handy hunter round of 8 obstacles which may include at least 2 of the following: trot jump, light turn option, clever options for jump approach, halt and/or back and walk jump. Judged on style, brilliance and handy. At least 4 riders necessary to fill a class. Prize money: \$60, \$50, \$40, \$25, \$25.



NORFOLK HUNT HORSE SHOW | JUMPERS

• 45 Second Start clock in effect, All ties for other than first place shall be broken by the time taken on course. Equal points will be awarded. Jump order randomly picked by computer and posted. Entry fee \$40 per class unless otherwise noted. Prize money: 10% add back (30%, 25%, 15%, 10%, 10%, 10%)

• Child/Adult, Hopeful & Low Training participating in Bay State Jumper Circuit Awards

Clear Blue. Open to all riders. Horses or ponies. Open until specified and fences are set at the height of the division showing. Clear round receives a blue ribbon. Entry Fee \$30 per class.

82. Clear Blue (Sat)

83. Clear Blue (Sun)

Hopeful Jumper Section. MHC Rated C. Open to all horses and ponies. Champion and Reserve will be given for Saturday and Sunday.

126. Hopeful Jumper/ Sat (.85m)

127. Hopeful Jumper/ Sat (.85m)

128. Hopeful Jumper/ Sat (.85m)

90. Hopeful Jumper/ Sun (.85m)

91. Hopeful Jumper/ Sun (.85m)

92. Hopeful Jumper/ Sun (.85m)

Low Training Jumper Section. No restrictions as to age or status of rider eligibility of horse. Champion and Reserve will be given for Saturday and Sunday.

129. Low Training Jumper/ Sat (.95m)

130. Low Training Jumper/ Sat (.95m)

131. Low Training Jumper/ Sat (.95m)

93. Low Training Jumper/ Sun (.95m)

94. Low Training Jumper/ Sun (.95m)

95. Low Training Jumper/ Sun (.95m)

Schooling Jumper Division. No restrictions as to age, status, or winning of horse/pony or rider.

96. Schooling Jumper (1.0m)

Norfolk Jumpers. Unrated. Championship Trophy & Ribbons. Open to all exhibitors. Open to horses & ponies.

140. Norfolk Jumpers Sat (.65m) II

143. Norfolk Jumpers Sun (.65m) II

141. Norfolk Jumpers Sat (.65m) II

144. Norfolk Jumpers Sun (.65m) II

142. Norfolk Jumpers Sat (.65m) II

145. Norfolk Jumpers Sun (.65m) II

Pre-Training Jumpers. Unrated. Open to horses & ponies. No restrictions as to age or status of rider.

137. Pre-Training Jumper (1.10m)

138. Pre-Training Jumper (1.10m)

JUMPER CLASSICS

To enter any classic rider must have entered another class

\$500 Mor Linn Farm Jumper Classic. Entry fee. \$100 per class. 102. Eight Ribbons. Prize Money \$150, \$125, \$100, \$75, \$25, \$25. \$500 Jumper Classic (1.0m) Table II Sec a,b. Open to Low Training & Children's Adult Jumpers.

\$500 SmartPak Jumper Classic. Entry Fee \$100.

105. SmartPak gift certificates and products awarded to the top 8 riders. Jumper Classic (.95m) Table II Sec a, b. Gift Certificates: \$150, \$125, \$100, \$75, \$25, \$25. Horse and rider must enter one class in their division to be eligible to enter this class.

\$3,000 Louisburg Farm Jumper Classic. Entry Fee \$200.

106. The Donald V. Little MFH Memorial Trophy. Cooler and eight ribbons. Prize money \$900, \$600, \$400, \$400, \$300, \$200, \$100, \$100. Jumper Classic (1.10m) Table II Sec 2a. Horse and rider must enter one class in their division to be eligible to enter this class.

MHJ Jumper Medals. Entry Fee: \$40 per class.

Riders must be Juniors or Amateurs to participate—No professionals allowed. Riders may not compete in any other class at the same competition where the fences exceed 1.15m except the USET Talent Search. Each show may run the respective class in any Table Format that works for them. Riders may show and qualify in any of the heights but may only choose one height for the Finals in August.

154. & 157. MHJ 0.65m Modified Jr/Am Jumper Medal

155. & 158. MHJ 0.85m Modified Jr/Am Jumper Medal

156. & 159. MHJ 1.0m Modified Jr/Am Jumper Medal

MISCELLANEOUS

Norfolk Thoroughbred Hunter. Entry fee \$35 per class. \$95.00 for division.

Open to all riders regardless of age or professional status. Open to anyone who is riding a Thoroughbred, raced or unraced. Academy horses welcome. Fences to be set at 2'6".

- 67. Norfolk Thoroughbred Hunter O/F
- 68. Norfolk Thoroughbred Hunter O/F
- 69. Norfolk Thoroughbred Hunter U/S

NEHC English Pleasure Horse. Entry fee \$35.

107. Rated "C" NEHC. Catch Me If You Can Memorial Trophy & Ribbons. Open to members and non-members. Open to all horses ordinarily used for pleasure purposes with no limitations as to the status of rider or place of residence. To be shown at a walk, trot, and canter. Will be required to back. Shall be judged on manners, performance, and quality—in that order. Loose rein on command of judge only, but without loss of canter.

Hunter Pleasure. Entry fee \$25. Sponsored in memory of Betty Jane Conant & MacCracken

108. Open. Rated "B" NEHC, MHC, SEHA. Open to all horses of a hunter type ordinarily used for pleasure purposes with no limitations as to the status of rider. To be shown at a walk, trot, and canter both ways of the ring Light contact with the horse's mouth is required. To be judged on manners, performance, quality, presence, substance, and soundness.

Hunter Pleasure Championship. Entry fee \$35.

In memory of Olivia Bergstrom

109. Rated "B" NEHC, MHC, SEHA. To be eligible, horse must have competed in class 108.

Prize money: \$20, \$10, \$10, \$5, \$5.

English Pleasure Hunt Seat. Entry fee \$25.

114. Rated "AA" NEHC & MHC. Open to Junior and Amateur Adult exhibitors. Riders to be judged the flat with emphasis on position, hand, seat, and the rider's horsemanship to execute a pleasure ride. No martingales or tie downs. Division may be divided if sufficient entries. Exhibitors cannot enter into Hunt Seat Equitation at the same show.

English Pleasure Championship. Entry fee \$30.

115. Same specs as above. Must have shown in class 114.

Academy Division. \$25 per class

Mount must be a horse/pony in a schooling/lesson program. Horses may cross enter from other divisions. Riders may not cross enter from other divisions. The quality of the animal has no bearing on his eligibility. Riders may not cross enter between walk, trot and walk, trot, canter. Champion & Reserve for crossrails division (122, 123, 124).

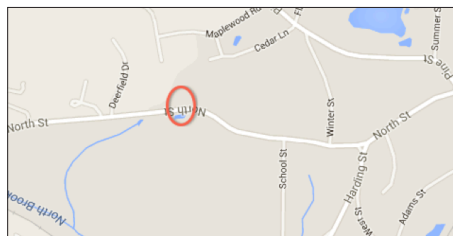
- 118. Academy Pleasure
- 119. Academy Equitation
- 120. Academy Pleasure Championship
- 121. Academy Equitation Championship
- 122. Academy Cross Rails O/F
- 123. Academy Cross Rails O/F
- 124. Academy Cross Rails Flat

HARD HATS MUST BE WORN BY ALL RIDERS ON THE STEEPLECHASE COURSE AT ALL TIMES.

DIRECTIONS:

The Norfolk Hunt Steeplechase Course
240 North Street, Medfield MA 02052

www.norfolkhunt.com
horseshow@norfolkhunt.com
617.817.2702



The Norfolk Hunt Horse Show

Perpetual Trophies

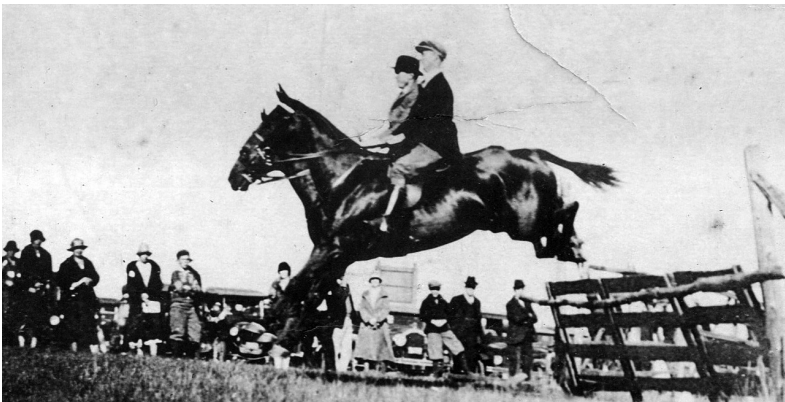
One of the things we pride ourselves most on is our deep roots in Dover and the towns surrounding it.

Being one of the oldest horse shows in the country, we have a lot of history to share. Every year we give out perpetual trophies to division champions as a prize, but to also allow them a chance to be part of our history.

These trophies are in memory of special horses, Norfolk Hunt Club members, friends of the hunt, and even horse shows that are no longer with us.

We would not have these trophies if it were not for the thoughtfulness of the community, our club members, and family members of loved ones, so we thank them whole heartedly.

It is our honor to share these trophies and our history with you.



UPCOMING

Norfolk Hunter Pace Series

Gorgeous routes with beautiful views.
Excellent trails. Inviting jumps. Jumping and flat divisions.

NORFOLK HUNTER PACE

Sunday, June 2, 2024
240 North Street, Medfield, MA

CHARLES RIVER PANORAMA HUNTER PACE

Sunday, August 4, 2024
Starting at Hospital Road, Medfield MA

WESTPORT HUNTER PACE

Sunday, October 27, 2024
Horseneck Road, Westport, MA

For more information or to register, please visit
www.norfolkhunt.com



Photo Credit: Peter Duprey

The Norfolk Hunt Club Today

The Norfolk Hunt is one of the oldest registered Fox Hunts in the United States. Norfolk began as a drag hunt in Dedham, Massachusetts in 1895 and moved to Dover, Massachusetts in 1903. The Norfolk kennels are the oldest kennels in America still in current use. Norfolk fox hunts over country that was opened to the Club through the kindness of landowners, some as long as 100 years ago. The majority of the land Norfolk hunts is located in the Charles River Watershed area (Dover, Medfield, Sherborn, South Natick, Millis, Walpole), as well as in Westport, South Dartmouth, Middleboro and Grafton, Massachusetts. Norfolk's hunting tradition continues today, through the generosity of current landowners. The support and understanding of the people who live in the towns in Norfolk's territory make it possible for the sport to continue and thrive.

Fox hunting is exhilarating and exciting; more than that fox hunting is a way of life. Everybody can participate—children, adults, both young and old. All that is needed is enthusiasm, love of the outdoors, and a horse. Without a horse, the action is still available: spectators can follow the Norfolk Hunt by car or on foot and enjoy the excitement of watching the horses and riders, seeing hounds and listening to their cry.

It takes a great deal of organization to run a successful drag hunt today. To approximate live fox hunting as closely as possible, a scent is laid by a human, "two-legged fox." The scent simulates the path of a live fox, dashing across pastures, circuiting through woodland, often

doubling back in close terrain. Hounds on the trail enthusiastically voice the scent and search the terrain to regain the path if they go afield. Hounds slow up as they work out their line; and riders on horseback are able to enjoy a good gallop over fences.

The hounds are carefully trained by the Masters of the Foxhounds, Huntsman and hunt staff. Trained solely for drag hunting, the Norfolk pack of American Foxhounds are bred to produce puppies that perpetuate the best traits for drag hunting, keeping the Huntsman busy throughout the year.

The Field Master is in charge of the riders following the Hunt, so they may enjoy the maximum amount of sport without interfering with the hunting of the hounds. Volunteers are recruited to assist at road crossings to avoid accidents to hounds, horses and the traveling public. The Norfolk Hunt strives to maintain the countryside it uses to further interest in hunting, hounds and all horse sports. Norfolk contributes to the maintenance and protection of over 200 miles of trails and 300 jumps in its hunt country.

Each and every member of the Norfolk Hunt extends special thanks to the landowners who so generously allow the Hunt through their property. Without the support of landowners, the Club could not carry on the tradition of the sport.

The Norfolk Hunt meets in the spring and fall, on Tuesday and Saturday mornings and some holidays. Hound schoolings take place on Thursdays.

Zoetis Petcare supports and protects the hounds
of the Norfolk Hunt Club

ZOETIS PETCARE

WE TAKE CARE OF PETS, LIKE PETS TAKE CARE OF YOU.™



Norfolk Hunt Horse Show

Saturday and Sunday, May 25th and May 26th, 2024***

Entries due by Friday, May 26th.

Enter on Horseshowing.com | Fax to 508-530-3263
Scan to sheahorshooservices@gmail.com as a PDF | Enter online: www.horseshowing.com

| NAME OF HORSE | | COLOR | SEX | HEIGHT | AGE | JR./HUNTER | SM | MED | L.G | MEASUREMENT CARD# | NAME OF TRAINER OR BARN NAME |
|---|--|-------|-----|---------------|-----|------------|----|-----|-----|-------------------|------------------------------|
| RIDER #1 NAME ADDRESS EMAIL ADDRESS | | | | | | | | | | | |
| RIDER #2 NAME ADDRESS EMAIL ADDRESS | | | | | | | | | | | |
| RIDER #1 MHC RIHA# | | NEHC# | | CLASSES EMBED | | TOTALS | | | | | |
| | | | | class# | | | | | | | |
| RIDER #2 MHC RIHA# | | NEHC# | | class# | | | | | | | |
| | | | | class# | | | | | | | |

Signature required in three places (at X) below - Signatures below indicate that each of us has read and understood this agreement.

I hereby enter the above at my own risk, subject to the rules of the MHC and engage to be responsible for any injury or damages that may occur to or be caused by any animals, vehicles, or trappings, or the loss of any animal, vehicle or trappings exhibited by me and I further agree to be absolutely responsible for the physical condition of any animal under my control or ownership and will also release indemnify and save harmless the said Horse Show and the town of Medfield from any damage expense and/or liability arising out of or resulting from any act of omission of the Exhibitor or said Horse Show and the town of Medfield, or their agents, servants, volunteers, contractors or employees and certify that all my horses are free from contagious disease.

- An open check must be left in the Horse Show Office to obtain a number.
- There will be a \$25 service charge for any checks returned unpaid.
- All competitor must present their current USFJ and INEHC membership card or copy thereof before a number can be given by the secretary.
- Pre-Entries must be accompanied by an Open Check (see Rule #21)

X

#1 Rider/Driver/Handler/Longeur signature (Mandatory)

(Parent/Guardian, if under 18 unavailable trainer can sign.)

Print Name: _____
 Street: _____
 City/State/Zip: _____
 Phone: _____
 Rider's USEF# _____

X

#2 Rider/Driver/Handler/Longeur signature (Mandatory)

(Parent/Guardian, if under 18 unavailable trainer can sign.)

Print Name: _____
 Street: _____
 City/State/Zip: _____
 Phone: _____
 Rider's USEF# _____

X

Trainer signature (Mandatory)

Print Name: _____
 Street: _____
 City/State/Zip: _____
 Phone: _____
 Trainer's USEF# _____

X

Owner/Agent signature (Mandatory)

Print Name: _____
 Street: _____
 City/State/Zip: _____
 Phone: _____
 Trainer's USEF# _____

ENTRY FEES

| | |
|---|---------|
| Office Fee | \$35.00 |
| Warm Up Fee | \$25.00 |
| Scratch Fee @ \$30 | |
| Post Entry Fee @ \$30.00 (lead line excluded) | |
| Total Due: | |
| Credits | |
| Paid In Cash | |
| Check Number | |

Make checks payable to: Norfolk Hunt Horse Show

ENTRY FORM

Please enter on HorseShowing.com